

CDK632 Mounting Kit



www.aampglobal.com www.iaus.net
2500 East Francis Street Ontario, CA 91761, U.S.A.
Sales: (800) 477-2267
Intl: (727) 572-9255
Support: 888-228-5560

VEHICLE APPLICATION

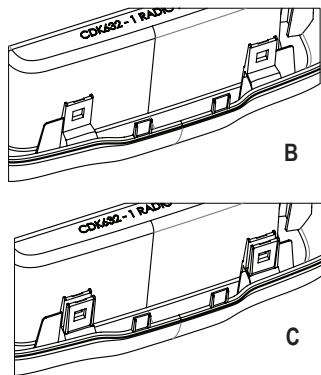
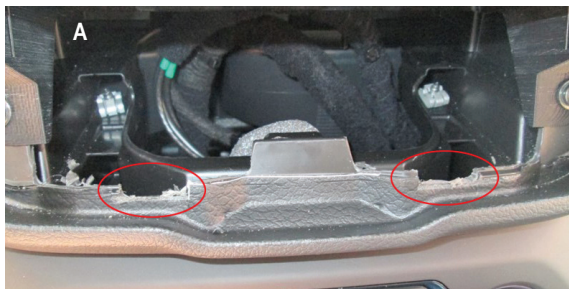
JEEP
2015-19 RENEGADE

DASH DISASSEMBLY INSTRUCTIONS

1. Using a soft tool, Unsnap and remove the radio trim panel. remove all (8) trim fasteners from the radio trim panel, saving for the kit assembly
2. From the brackets supporting the radio, remove (4) T-20 Torx Screws. Remove radio & unplug any wiring harnesses and antenna connectors.

BOTTOM TAB(S) INSTRUCTIONS

1. If your sub-dash does not have the cutouts seen below in Photo A, remove the bottom tab (See Figure B). Installing 2 clips from the disassembly to the remaining posts.
2. If your sub-dash does have the cut outs seen in Photo A, keep both tabs and install 2 clips from the disassembly to the bottom posts.

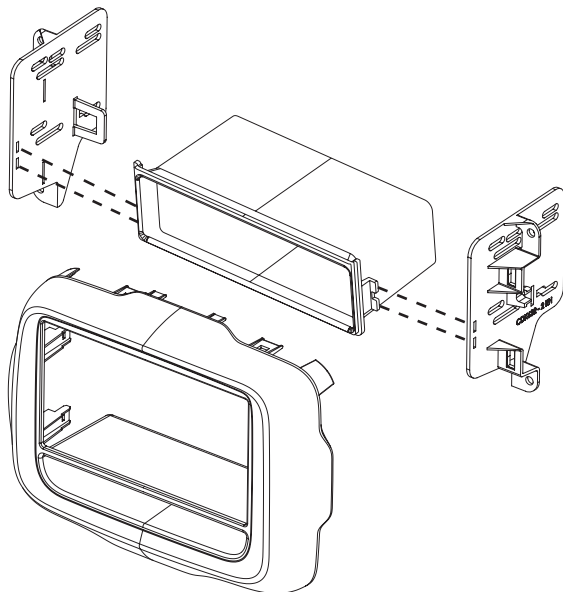


KIT ASSEMBLY INSTRUCTIONS

Single ISO Mount Application

1. Install the (8) trim clips to the rear of the CDK632 main frame, left over from the factory trim panel.
2. Insert pocket into lower section of the brackets and snap into rear pocket support tabs.
3. Insert ISO mountable radio between ISO mount brackets and loosely attach to sides of radio using screws provided with radio when possible, or screws supplied with kit.
4. Using the main frame of the as a guide, slide radio forward or backward for desired look and then tighten screws to the radio.

Figure D



DOUBLE DIN INSTALLATION INSTRUCTIONS

Double DIN ISO Mount Application

See Fig E for bracket tab removal.

1. Install the (8) trim clips to the rear of the CDK632 main frame, left over from the factory trim panel.
2. Remove rear pocket support tabs.
3. Insert ISO mountable radio between ISO mount brackets and loosely attach to sides of radio using screws provided with radio when possible, or screws supplied with kit.
4. Using the main frame of the as a guide, slide radio forward or backward for desired look and then tighten screws to the radio.

Figure E

Remove shaded tabs on left and right sides of the brackets (Right side not shown)

